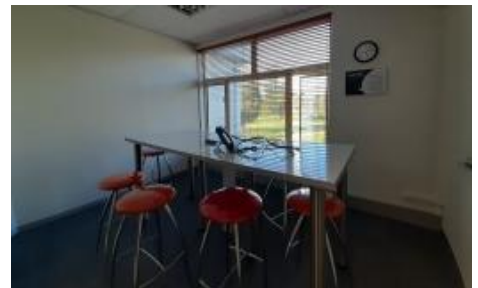


Offices to rent in Techno Park



R 163 415

Web Reference 8894R

Modern offices to rent in Techno Park

Modern, air-conditioned offices, situated on the second floor available to rent in Techno Park, offering basement and shade-net parking. The property is equipped with fibre and a backup generator.

Floor area: 418m²

Rental rate: R145/m² plus VAT per month

Basement parking: 12 bays

Shade-net parking: 4 bays

Visitors parking: 2 bays

Rental includes: Parking

Levies

Municipal Rates

Contact me for this or other office space to let in and around Stellenbosch.

Erf Extend: ±1127 m²

House Size: ±418 m²

Parking: 18



Hannes Seyffert

Property Consultant

T: +27 21 887 4740 C: +78 176 1987

Email: hannes@annabasson.co.za

Professional Valuer

vcard

