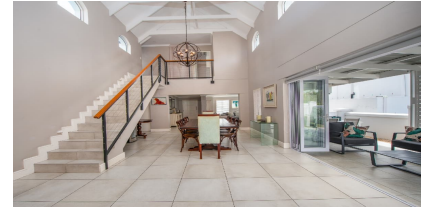


Digteby

Digteby Estate living – Beyond expectations



R 6 750 000

Web Ref: 11213

Joint Sole Mandate. Tucked away in a beautiful tree-lined street this impeccable home offers a perfect blend of luxury, comfort, convenience and magical mountain view's.

Upon entering the front door you will enjoy the superb flow from the inter leading reception rooms to a dream kitchen walking out onto a charming undercover patio & pool area.

Added bonus luxuries include aircon's, fireplace, indoor braai, inverter, solar geyser and a tiled garage. The 4th bedroom and bathroom is ideally located on the ground floor for added guest privacy or to use as a study if needed.

Digteby is an impressive security estate about 5km from Stellenbosch en-route to Cape Town. It's a hidden gem and a pristine destination for those who want to live close to nature in a relaxed environment.

Ideal for a lock-up & go lifestyle

Features:

Fireplace, Blinds, Double Storey, Window Frames Aluminum, Paved Washing Line Area, Patio, Pool, Braai Area, Entrance Hall, Floors: Tiles, 1 Open Parking

Rooms:

4 Bedrooms

4 Bathrooms

3 Living Areas

Kitchen

2 Garages

Property Details:

Floor Size: ± 275 m²

Plot Size: ± 400 m²

Cornette Liebenberg

Telephone:

021 887 4740

Mobile:

082 569 9160

Whats App:

082 569 9160



Levy: R 3 900

Rates and Taxes: R 2 370